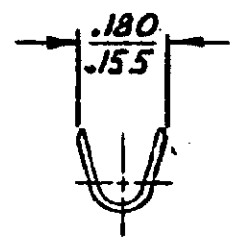
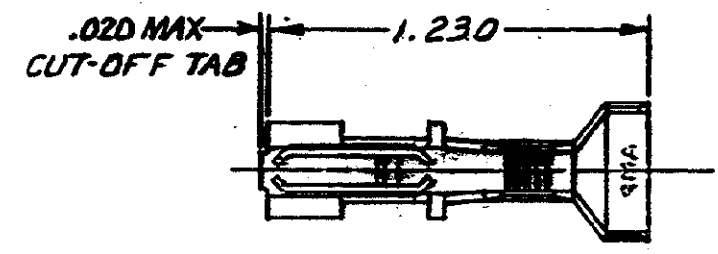


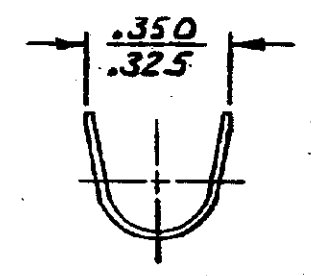
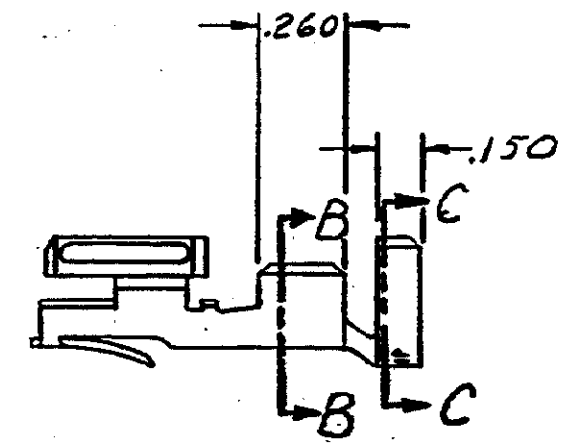
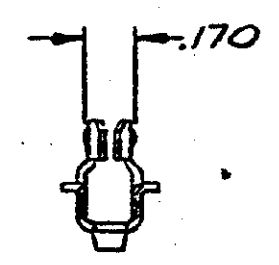
ING MADE IN THIRD ANGLE PROJECTION

COPYRIGHT 1977 BY AMP INCORPORATED, HARRISBURG, PA.
 ALL INTERNATIONAL RIGHTS RESERVED. AMP INCORPORATED PRODUCTS
 COVERED BY U. S. AND FOREIGN PATENTS AND/OR PATENTS PENDING.

		REVISIONS			LOC	DIST
P	ZONE	LTR	DESCRIPTION	DATE	APPROVED	
✓		0	DWG. REL. M-4121	2-11-77	MF.	39
✓		A	REVISED PER M-4428	9-25-77	DA/D.H.	
✓		A1	RESTORATION	9-25-77	NJ	
✓		B	OBSOLETE - 2 SHEETS CM-473	8-26-76	RS	
✓		C	WAS LOC CM, REVISED ECN 54141	8-18-87		
✓		D	REV. PER ECN CF 1717	11-14-88	SB	



SECT. B-B



SECT. C-C

		.270	16 - 12	350822-1
		INSULATION DIA. MAX	WIRE RANGE	PART NO
UNLESS OTHERWISE SPECIFIED DIMENSIONS ARE IN INCHES. TOLERANCES ON: DECIMALS ±.015 ANGLES ±1°0'	CONTRACT NO	AMP INCORPORATED Harrisburg, Pa.		
	DR <i>M. J. Law</i> 2-4-77	NAME TERMINAL, HIGH CURRENT, HERMAPHRODITIC, LOOSE PIECE		
MATERIAL PHOS BRZ	CHK <i>D.S. Heide</i> 3/4/77			
FINISH TIN	APPD <i>[Signature]</i> 3/5/77	SIZE B	CODE IDENT NO 00779	DRAWING NO 350822
OTHER APPD		SCALE	SHEET 1 OF 1	